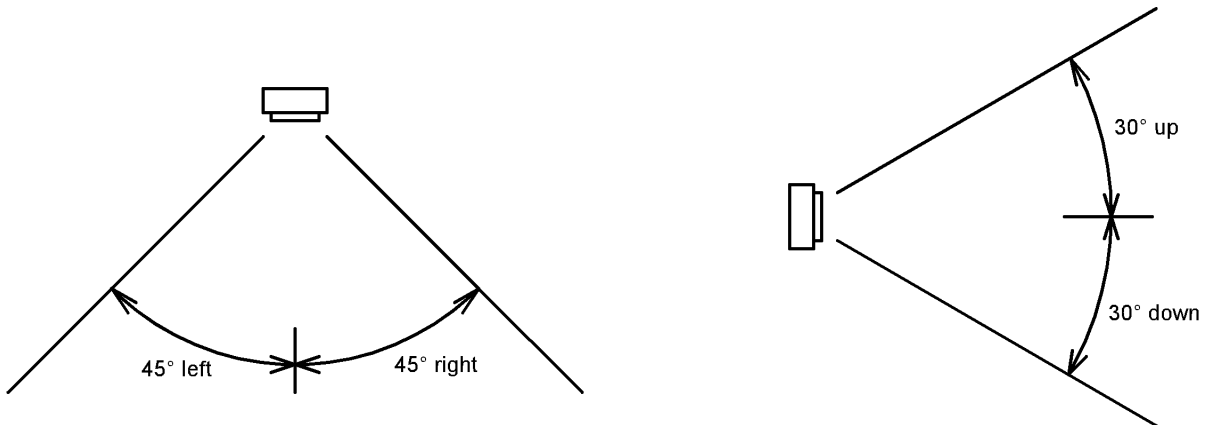


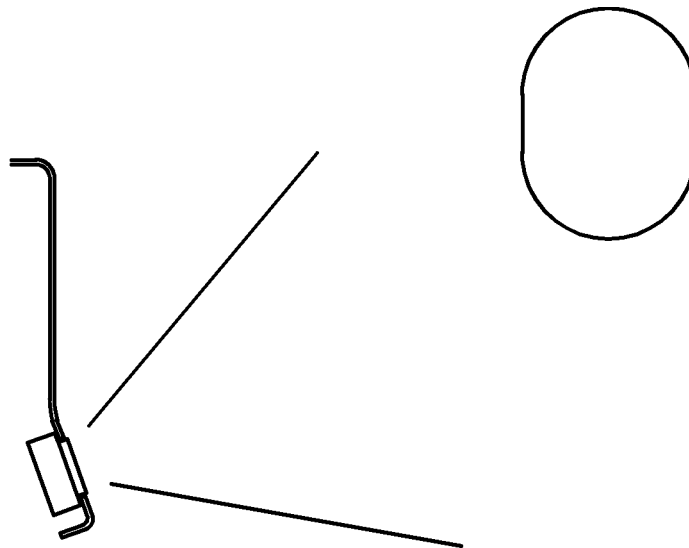
Panel-Display Installation Guide

Positioning on instrument panel

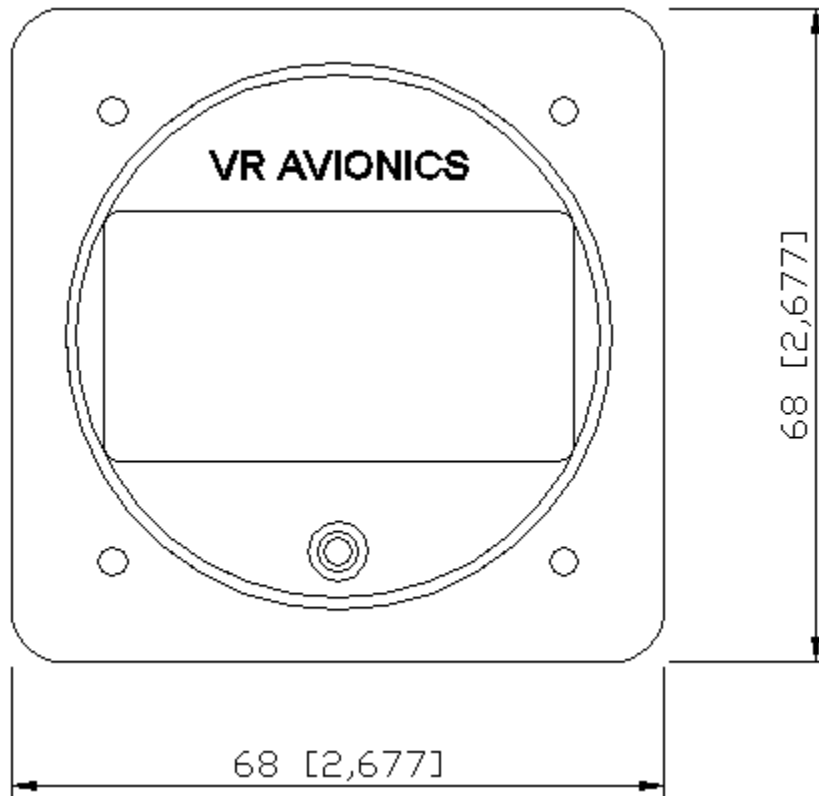
Shown below are the recommended maximum viewing angles from left to right as well as from top to bottom:



We recommend that the instrument panel face be tilted slightly upwards to achieve the best results. This is especially applicable when wanting to mount the panel-display low-down on the instrument panel as illustrated below..

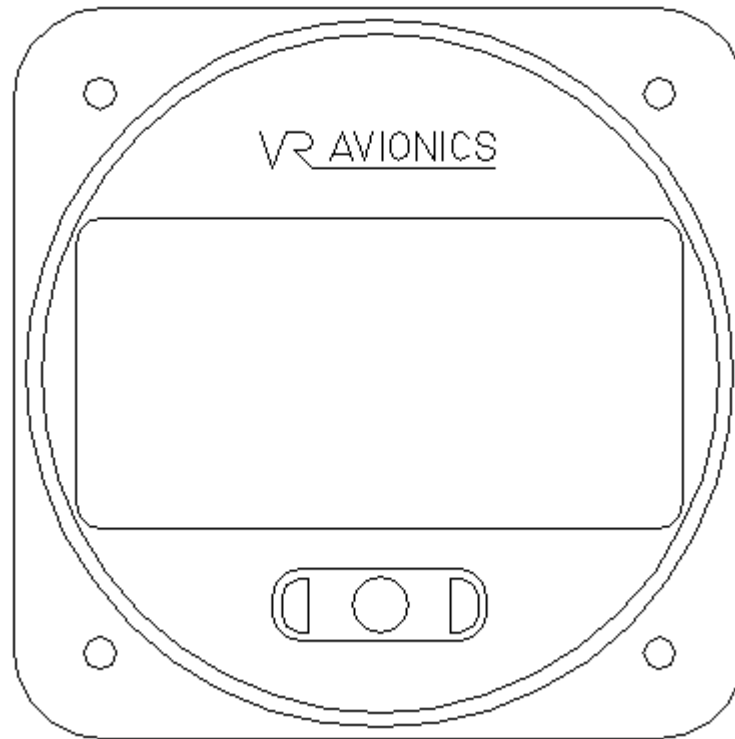


Back-of-panel dimensions - MPD



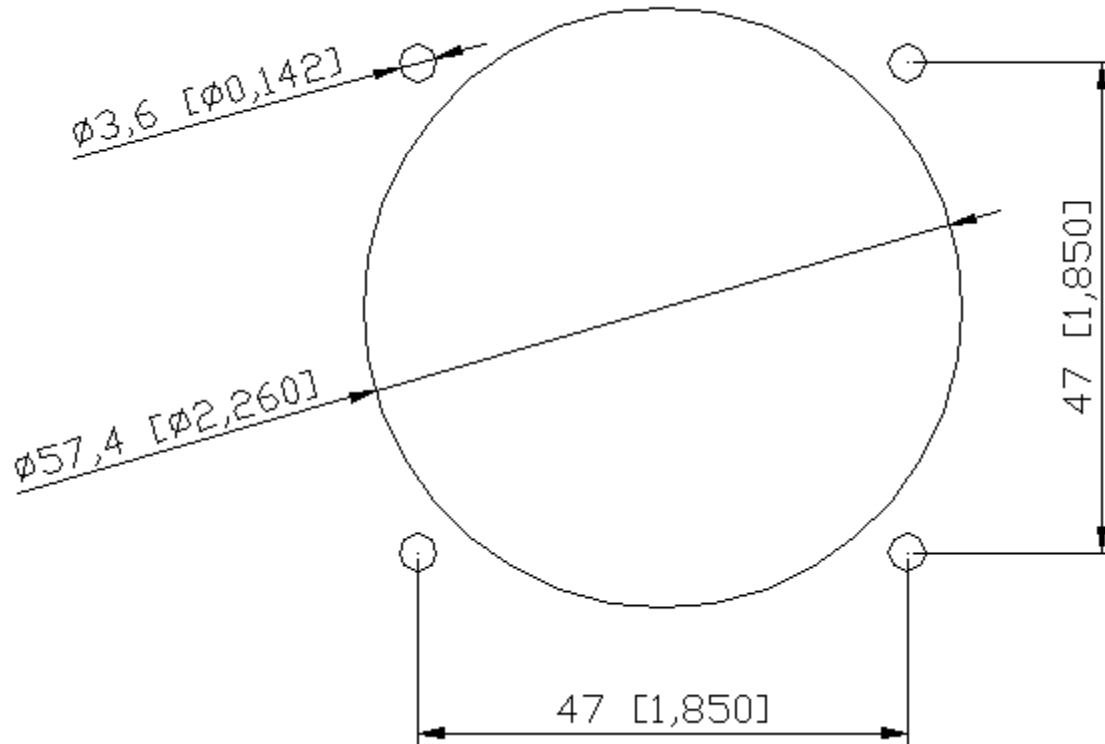
The Micro Panel-Display (MPD) takes up a space of 68 x 68 mm to a depth of 35 mm (1.378") behind the instrument panel.

Back-of-panel dimensions - 3PD

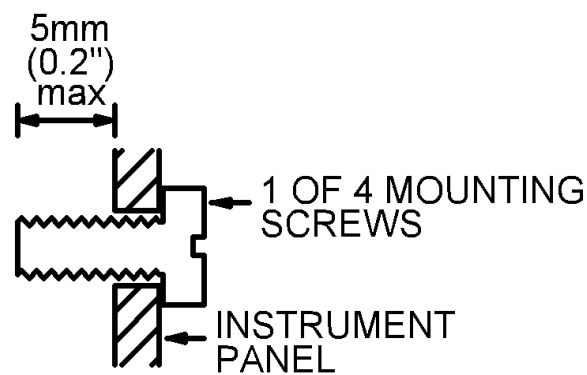


The 3" Panel-Display (3PD) takes up a space of 82 x 82 mm to a depth of 35 mm (1.378") behind the instrument panel.

Panel cutout for MPD



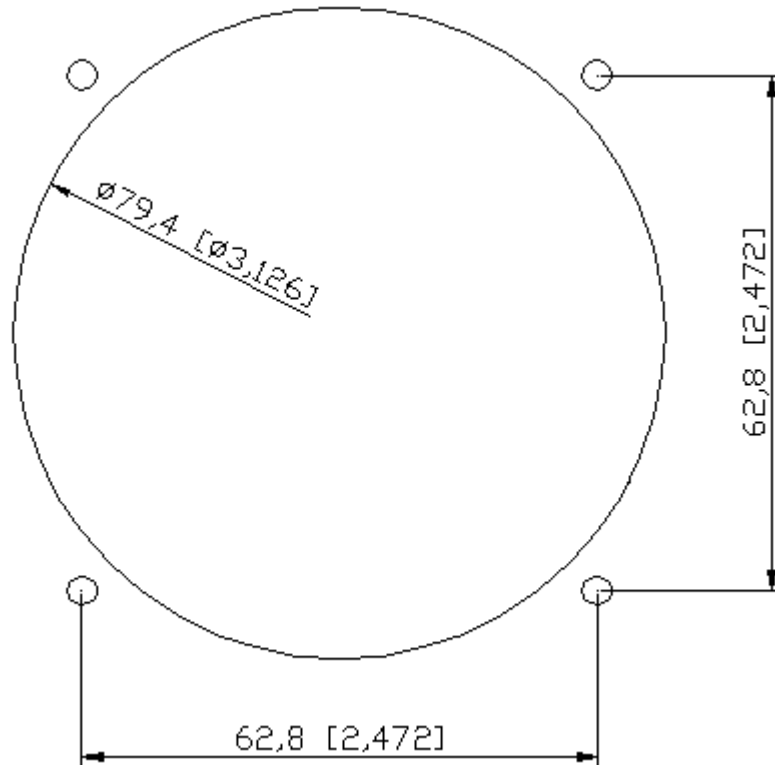
Important: Use four 6-32 screws of length as indicated below.



As shown on the figure above, the mounting screws must NOT protrude more than 5mm (0.2") at the back of your instrument panel. Internal damage may result if longer than specified screws are used.

Panel cutout for 3PD

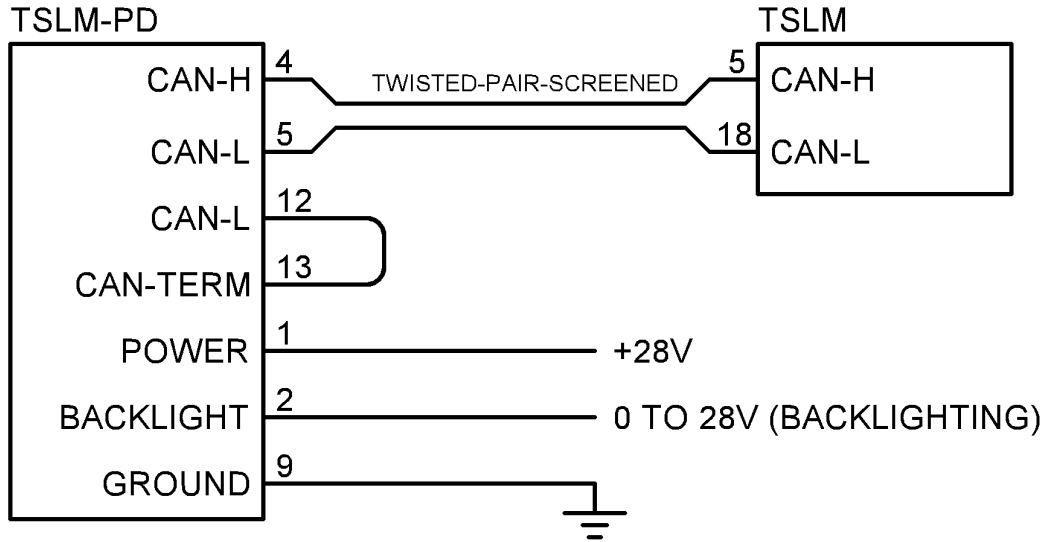
The following drawing shows the cutout dimensions for the 3.125" panel-display:



Electrical connection – MPD & 3PD

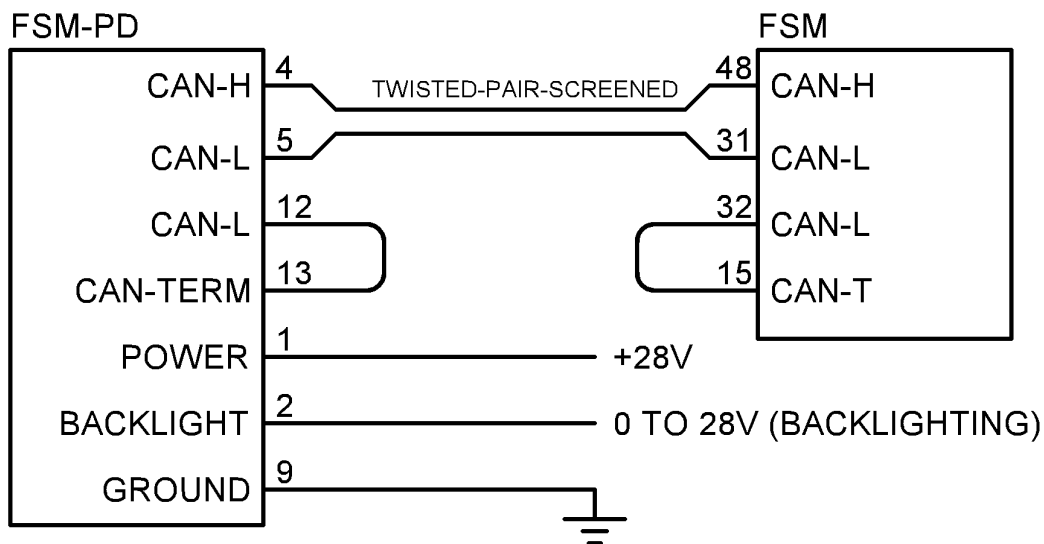
The diagrams below show the connection to either a TSLM or FSM system. Please note that newer versions of the MPD and 3PD does not require the backlight (pin 2) connection, since brightness control has been integrated in these units.

When installing to a TSLM system you need to follow the diagram below:



GAUGE CONNECTS VIA DB-15 FEMALE WITH CRIMP TERMINALS

When installing to a FSM system you need to follow the diagram below:



GAUGE CONNECTS VIA DB-15 FEMALE WITH CRIMP TERMINALS